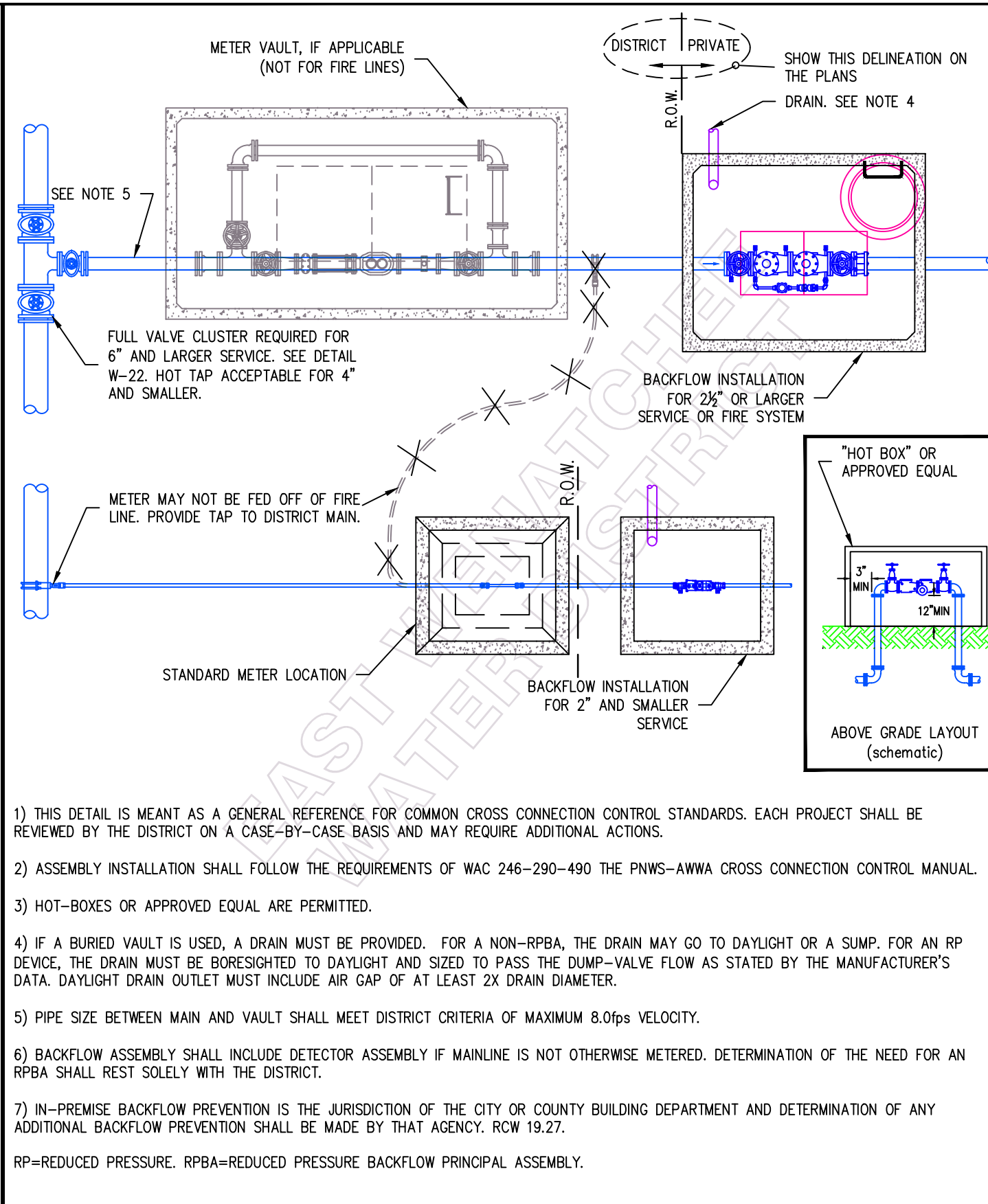
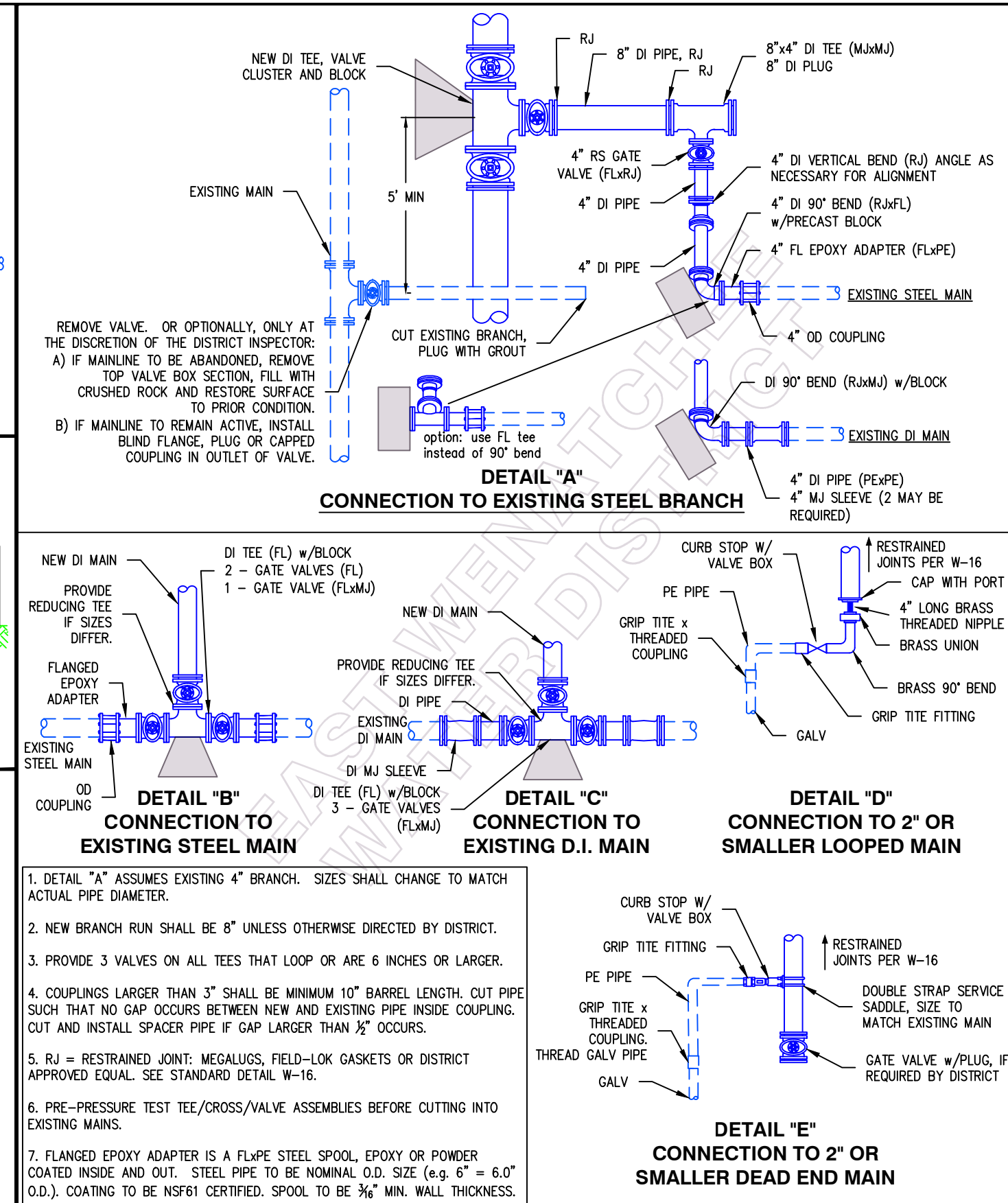


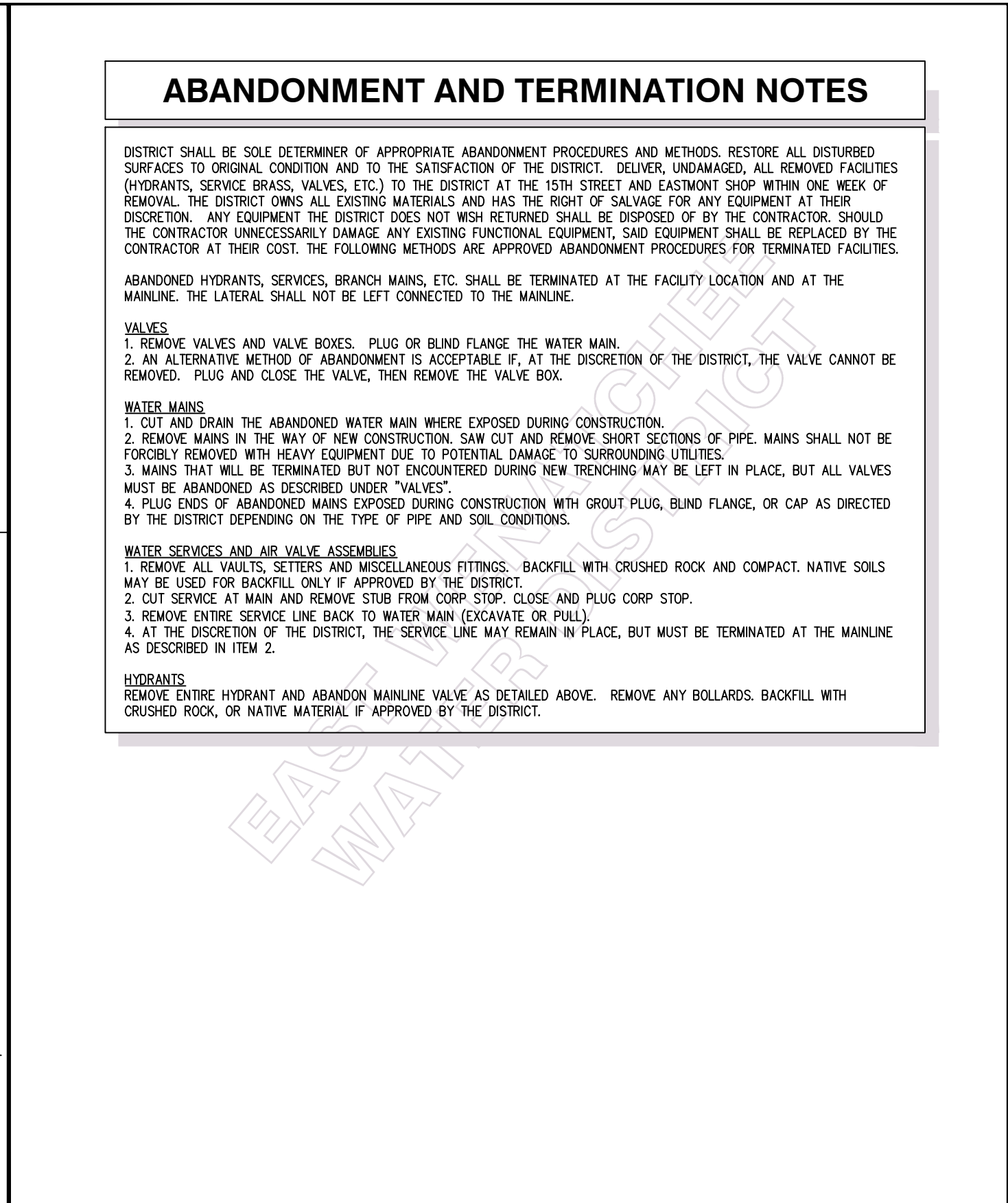
East Wenatchee Water District	WATER SYSTEM STANDARD DETAIL	
BACKFLOW PREVENTION ASSEMBLY	DRAWING NO. W-13	SHEET NO. 25
File:EWDTW4	Revised: JAN 25, 2017	Printed: JAN 25, 2017



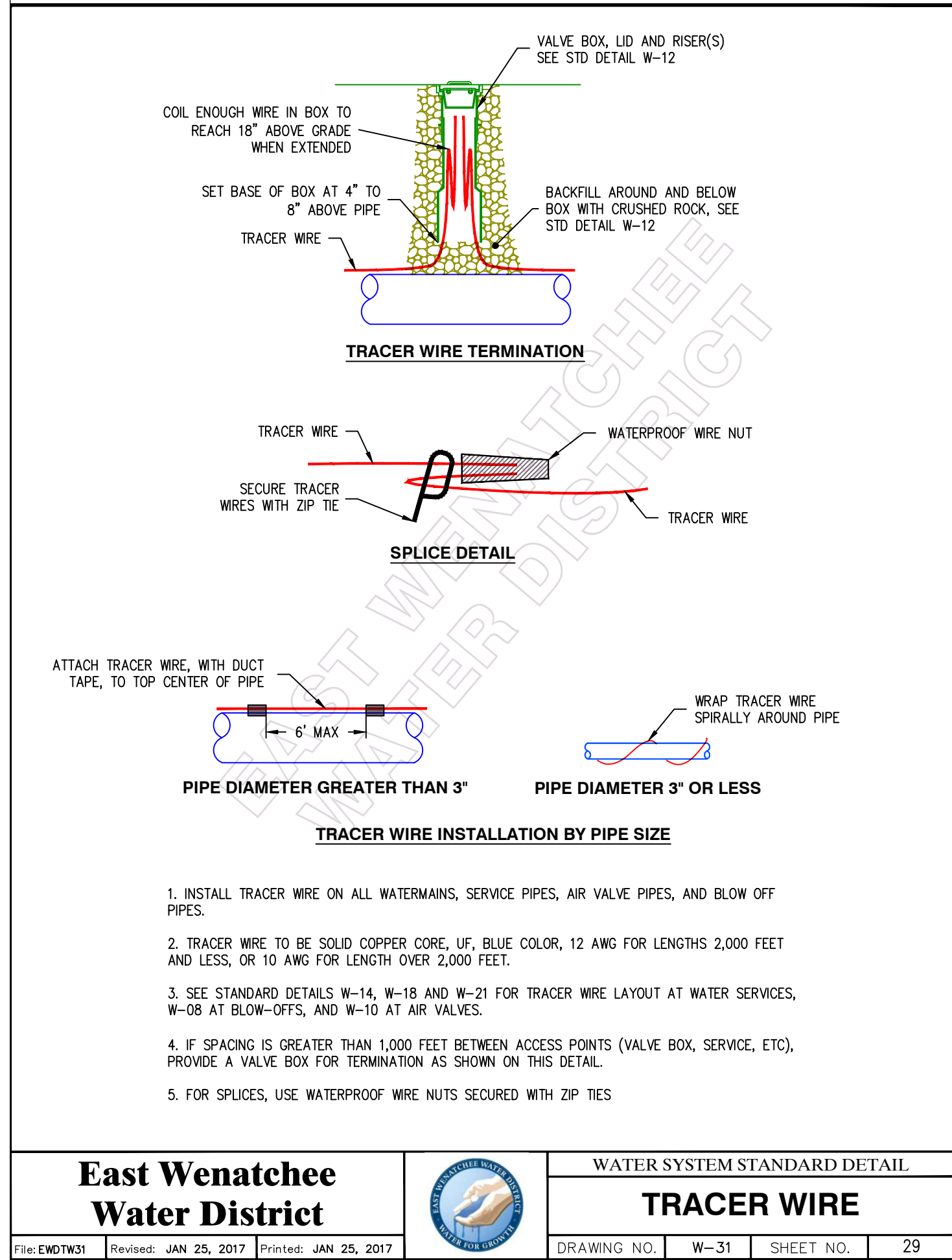
East Wenatchee Water District	WATER SYSTEM STANDARD DETAIL	
BACKFLOW ASSEMBLY INSTALLATION	DRAWING NO. W-25	SHEET NO. 26
File:EWDTW2	Revised: FEB 3, 2012	Printed: FEB 3, 2012



East Wenatchee Water District	WATER SYSTEM STANDARD DETAIL	
CONNECTIONS TO EXISTING MAINS	DRAWING NO. W-22	SHEET NO. 27
File:EWDTW28	Revised: JUL 22, 2014	Printed: JUL 22, 2014



East Wenatchee Water District	WATER SYSTEM STANDARD DETAIL	
ABANDONMENT OF TERMINATED FACILITIES	DRAWING NO. W-15	SHEET NO. 28
File:EWDTW29	Revised: JAN 25, 2017	Printed: JAN 25, 2017



East Wenatchee Water District	WATER SYSTEM STANDARD DETAIL	
TRACER WIRE	DRAWING NO. W-31	SHEET NO. 29
File:EWDTW31	Revised: JAN 25, 2017	Printed: JAN 25, 2017

REVISION HISTORY

JULY 2008

- W-01 REMOVED NOTE DESCRIBING ACCESSORIES FOR VALVE BOXES. INFO IS NOW ON W-12.
- W-02 ADDED KENNEDY K81D AS AN APPROVED MODEL.
- W-10 REMOVED DIMENSION FROM CENTER OF VAULT TO SIDEWALK. INFO IS NOW ON W-29.
- W-10 REVISED NOTE 2, CHANGED "CURB STOP" TO "ISOLATION VALVE".
- W-10 REMOVED NOTE ABOUT PROVIDING A VALVE POST.
- W-11 ADDED RESTRAINED JOINTS AS OPTION FOR PIPE RESTRAINT.
- W-12 CLARIFIED CRUSHED ROCK PLACEMENT. ADDED NOTE FOR 1,000" SPACING. ADDED NOTE FOR VALVE RESTRAINT. ADDED NOTE ON VALVE BOX APPURTENANCES.
- W-19 ADDED LADDER-UP EXTENSION.
- W-29 ADDED NOTE 3 ABOUT SECURING FRAME TO VAULT. ADDED NOTE 7 ABOUT CORRECT PLACEMENT WITH FUTURE SIDEWALK.
- W-20 ADDED LADDER-UP EXTENSION. ADDED NOTE 7 ON METER CAPACITY.
- W-24 ADDED LADDER-UP EXTENSION. ADDED NOTE 7 ON METER CAPACITY.
- W-13 ADDED NOTE ON TEST COCK ORIENTATION. ADDED LADDER-UP EXTENSION. SPECIFIED BYPASS METER MODEL.
- W-22 ADDED DETAIL "D" FOR CONNECTION OF 2" AND SMALLER MAIN.

JULY 2009

- W-01 ADDED NOTE SPECIFYING PIPE CLASS.
- W-03 REVISED DIMENSION ON BASE OF TRENCH WIDTH ON TYPICAL TRENCH DETAIL.
- W-14 CLARIFIED PIPE DIAMETER RANGE FOR SERVICE SADDLE.
- W-14 ADDED TO CAP THE TERMINATED CORP STOP ON THE ABANDONED SERVICE.
- W-14 ADDED U-BOLT STYLE SADDLE AS ACCEPTABLE.

DEC 2009

- W-25 INCLUDED MINIMUM DIMENSION OF 3" FROM PIPE TO HOTBOX WALL, SAME AS STATE STANDARDS.

JAN 2011

- W-01 ADDED NOTE ON CASING AND RUNNER REQUIREMENTS.
- W-02 WATEROUS HYDRANT MODEL UPDATED TO NEW MODEL NUMBER W67-250.
- W-03 UPDATED CRUSHED ROCK DEPTH NOTE TO MATCH CITY/COUNTY ROAD STANDARDS.
- W-03 CHANGED ROCK DEPTH FOR SHOULDERS AND UNDER SIDEWALKS FROM 6" TO 4".
- W-04 UPDATED DOT SPEC NUMBER ON "CONSTRAINTS" NOTE #3.
- W-12 ADDED NOTE TO SET LID BETWEEN 0" TO 1/4" BELOW PAVED SURFACE.
- W-13 ADDED NOTE ON PIPE PASSING THROUGH VAULT WALL TO BE DI OR USE FLEX BOOT.
- W-14 REMOVED CONFLICTING NOTE ON SERVICE LINE DIAMETER.
- W-18 CHANGED CURB STOP FROM MIP TO FIP.
- W-21 ADDED NOTE THAT CURB STOP SIZE SHALL MATCH INCOMING SERVICE LINE SIZE.
- W-22 OPTION FOR USING A TEE INSTEAD OF A 90° AT THE TIE FOR EASIER THRUST BLOCKING.
- W-22 ADD NOTE TO PLUG CUT END OF ABANDONED PIPE WITH GROUT.
- W-22 ADD NOTE DEFINING A "FLANGED EPOXY ADAPTER".
- W-25 REVISED NOTE THAT SAID DEVICE MAY BE LOCATED IN MECHANICAL ROOM. THIS IS NO LONGER PERMITTED AS THE SOLE METHOD OF BACKFLOW PROTECTION.

OCT 2011

- W-10 ADDED 3D DETAIL FOR CORP STOP BLOCKING AND SADDLE CONNECTION. CHANGED GALV FITTINGS TO BRASS.
- W-21 REMOVED REFERENCE TO 7" HIGH SETTER. SETTER HEIGHT IS INCLUDED IN MODEL NUMBER.
- W-12 ADDED WORDING ON NOTE 20 TO CLARIFY DI PIPE AS THE STANDARD. CONSISTENT WITH COMPREHENSIVE PLAN.
- W-13 ADDED METER MODEL NUMBER "SR11".
- W-01, W-30 CREATED SECOND CONSTRUCTION NOTES PAGE.
- W-30 ADDED NOTE REQUIRING CONTRACTOR EXPERIENCE.

JULY 2013

- W-09 INCREASED MINIMUM BLOW OFF SIZE TO 4" FOR 14" AND LARGER MAINS. ADDED NOTE FOR TAP SIZE TO BE NO LESS THAN BLOW OFF SIZE.
- W-10 SPECIFIED PVC TO BE MINIMUM SCHEDULE 40.
- W-13 DRAIN SIZE NOTE CHANGED TO 4" (MIN). RP DEVICES MAY NEED A LARGER DRAIN.
- W-13 CHANGE BYPASS METER REGISTER MODEL FROM EGS TO TR/PL.
- W-13 REMOVED FLANGE PIPE ON INLET AND REPLACED WITH FCA.
- W-14 ADD LOCATING TAPE LABEL "BURIED WATERLINE".
- W-15 REMOVED REDUNDANT VALVE NOTE. ADDED NOTE TO CUT SERVICE AT MAIN.
- W-30 ADD VAULT LID NOTE DESCRIBING TAPER-TOP STYLE LID REQUIREMENTS. REMOVED RELATED NOTES FROM RELEVANT DETAILS (W08, W10, W18, W21) AND REFERRED BACK TO CONSTRUCTION NOTES. LID SPECIFICATION WAS NOT CHANGED.
- W-30 ADD NOTE REGARDING USE OF MINIMUM SCH 40 PVC FOR IRRIGATION REPAIRS.
- W-30 EXPANDED HATCH NOTE TO CLARIFY THE FRAME DRAINAGE REQUIREMENTS.
- W-30 ADDED NOTE REQUIRING 48-72 HOURS NOTICE TO DISTRICT FOR OUTAGES.

JULY 2014

- W-07 DEFINED MATERIAL FOR ALL TIE/SHACKLE RODS. UPDATED DETAILS (W02, W05, W17, W20, W24) TO REFERENCE BACK TO W-07 FOR ROD MATERIAL.
- W-10 ADDED TRACER WIRE TO SUPPLY LINE. ADDED #24 MESH SCREEN TO VENT.
- W-12 ADDED DETAIL FOR CURB STOP RISER PIPE.
- W-13 UPDATED BYPASS METER REGISTER MODEL.
- W-14 ADDED CONCRETE BLOCKING AND PT WOOD SHIM CALLOUT.
- CHANGED SERVICE LINE SIZE FOR 3/4" METER BASED ON WHICH SIDE OF THE STREET.
- ADDED FOR CONNECTION TO EXISTING SERVICE BE AT OR BEHIND ROW.
- W-17 CHANGED 1/2" AIR RELEASE VALVE TO 1" COMBINATION AIR VALVE, UPDATED PIPING. ADDED AIR VALVE TO BOTH SIDES OF PRV.
- ADDED NOTE TO ADDRESS THE LOCATION OF GAUGE & AIR VALVE.
- W-18 UPDATED FORD METER SETTER MODEL NUMBERS. ADDED A 3" LONG BRASS NIPPLE BETWEEN CURB STOP AND SETTER.
- W-19 UPDATED LINE WORK FOR AIR VALVE PER CHANGE TO W-17.
- W-20 REMOVED BASKET STRAINER.
- W-21 UPDATED FORD METER SETTER MODEL NUMBERS. ADDED 6" BRASS NIPPLE BETWEEN CURB STOP AND SETTER.
- W-22 CHANGED VALVE ON 2" AND SMALLER DETAIL TO CURB STOP, ADDED MINIMUM WALL THICKNESS TO FLANGED EPOXY ADAPTER. ADDED DETAIL FOR CONNECTION TO EXISTING 2" AND SMALLER DEAD END MAIN.
- W-24 REMOVED BASKET STRAINER.
- W-26 CREATED NEW DETAIL FOR COMMON LARGE VALVE INFORMATION.
- ADDED NOTE THAT ALL EXTERIOR THRUST BLOCKS ON LARGE VAULTS SHALL BE INSTALLED PRIOR TO THE PIPE INSTALLED THROUGH THE VAULT BEING CUT OUT.
- ADDED A NOTE THAT REINFORCED THRUST BLOCKS SHALL BE FORMED USING WOOD FORMS NOT POURED DIRECTLY AGAINST SOIL.
- ADDED NOTE THAT REINFORCED THRUST BLOCKS SHALL BE CONSOLIDATED USING VIBRATION.
- W-29 ADDED NOTE THAT CUSTOMER SIDE CASINGS ARE ALWAYS REQUIRED.
- W-30 ADDED NOTE TO DELIVER SALVAGED VALVES WITHIN ONE WEEK AND UNDAMAGED.
- W-30 ADDED NOTE THAT RESTRAINTS AND AFFECTED PIPE MAY NOT BE REUSED ONCE ASSEMBLED.

NOVEMBER 2014

- W-20 REVISED METER LAY LENGTH AND MODEL FROM NEPTUNE TO SENSUS.
- W-24 REVISED METER LAY LENGTH AND MODEL FROM NEPTUNE TO SENSUS.
- W-30 ADDED NOTE FOR FLANGE GASKET AND BOLT MATERIALS.

JUNE 2015

- W-07 REMOVED ASTM A36 STEEL FROM TABLE HEADING.
- W-08 REVISED NOTE TO SEE DETAIL W29 FOR VAULT INSTALLATION REQUIREMENTS.
- W-10 REVISED NOTE TO SEE DETAIL W29 FOR VAULT INSTALLATION REQUIREMENTS.

JUNE 2015 (CONTINUED)

- W-10 CHANGED VAULT LOCATION TO BE IN SIDEWALK.
- W-13 REVISED VAULT DRAINS TO CONFORM TO DETAIL W-26.
- W-15 REVISED FIRST PARAGRAPH.
- W-26 REVISED NOTE REGARDING PIPE LENGTHS TO ACCOMMODATE LONG VAULTS.
- W-26 ADDED REQUIREMENT OF 2 SUPPORTS FOR LADDER-UP EXTENSIONS.
- W-21 ADDED PRESSURE TESTING TO PE PIPE SERVICE CONNECTION.
- W-21 ADDED LENGTHS FOR BRASS NIPPLE BASED ON SINGLE OR DOUBLE SERVICE.
- W-23 ADDED PRESSURE TESTING TO PE PIPE SERVICE CONNECTION.
- W-29 CHANGED DETAIL TITLE TO "WATER SERVICE, AIR VALVE, BLOW OFF VAULT INSTALLATION PLACEMENT".
- W-29 ADDED PRESSURE TESTING TO PE PIPE SERVICE CONNECTION.
- W-29 CHANGED NOTE ON THE LIDS INSTALLATION WITHIN SIDEWALK DETAIL TO REQUIRING A FULL PANEL OF SIDEWALK AROUND VAULT WHEN SIDEWALK IMPROVEMENTS ARE DEFERRED.
- W-29 DETAIL NOTE CHANGES:
 - ADDED TO NOTE TO SET LID 2" ABOVE FINISHED GRADE IN LANDSCAPE AREAS.
 - ADDED NEW NOTE TO INSTALL MASTIC BETWEEN VAULT SECTIONS
 - ADDED NEW NOTE REQUIRING A HMA APRON AROUND THE LID IN UNPAVED TRAVEL AREAS.
- W-30 RE-ADDED VAULT LID NOTE ACCIDENTALLY DELETED DURING 2014 REVISIONS.
- W-30 MOVED NOTE REGARDING SALVAGED EQUIPMENT TO DETAIL W-15.

January 2017 (CONTINUED)

- W-30 RELOCATED CASING NOTE TO CASING DETAIL, W-32
- W-30 UPDATED CONTRACTOR SHUT-DOWN REQUIREMENT NOTE
- W-30 INCLUDED ASTM A307 GRADE 8 FOR FLANGE BOLTS
- W-31 NEW DETAIL CREATED FOR TRACER WIRE INSTALLATION
- W-32 NEW DETAIL CREATED FOR CASING PIPES

East Wenatchee Water District	WATER SYSTEM STANDARD DETAIL	
TRACER WIRE	DRAWING NO. W-31	SHEET NO. 29
File:EWDTW31	Revised: JAN 25, 2017	Printed: JAN 25, 2017

